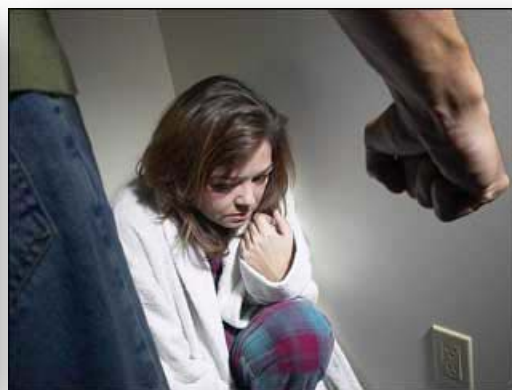
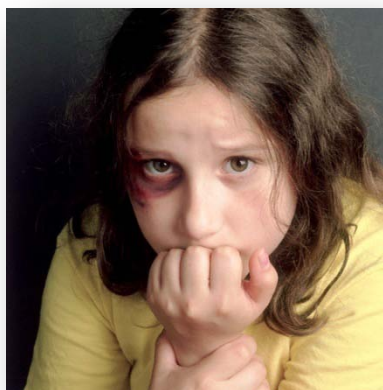


Animal Abuse and Family Violence: Partners in Crime

A Self-Guided Training Presentation for Law Enforcement Officers



PART 1: Introduction to the Animal Abuse/Family Violence Links



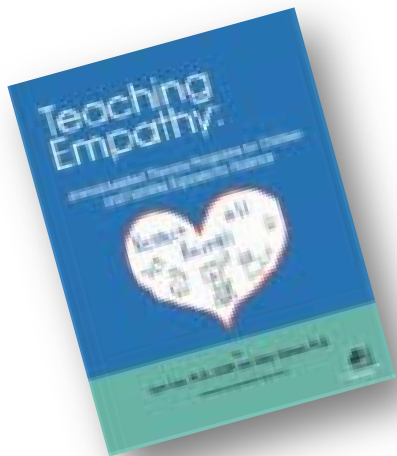
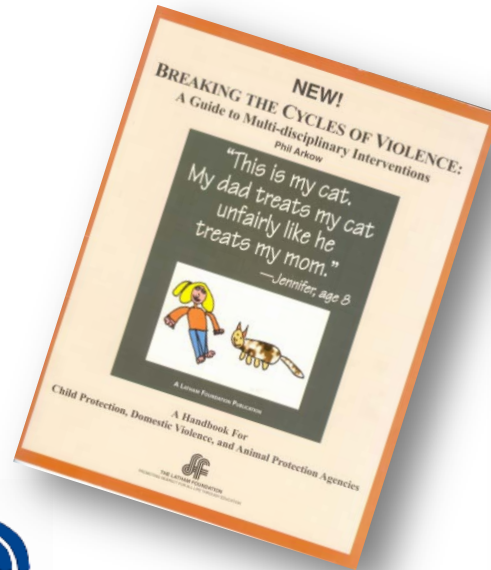
Animal Abuse & Family Violence Prevention Project
The Latham Foundation
1826 Clement Avenue
Alameda, CA 94501
www.latham.org
(510) 521-0920



The Latham Foundation

For the Promotion of Humane Education

About The Latham Foundation



www.latham.org

Objectives: You will understand...

- **The significance of animal abuse as a predictor and indicator of domestic violence and other forms of family violence**
- **Your state statutes affecting animal cruelty and domestic violence**
- **Techniques for investigating and gathering evidence in animal abuse/domestic violence cases**
- **Law enforcement and criminal justice system strategies**
- **Resources for additional information and training**



Why Should Law Enforcement Officers Care About Animal Cruelty?

- **Animal cruelty cases are human health and safety issues**
- **Animal cruelty is a crime**
- **Offenders frequently have histories of multiple forms of aggression**
- **Motivations are similar**
- **Animal abuse rarely occurs in isolation**
- **Dealing with the same perps**
- **Early intervention can prevent violence from escalating**



The National Law Enforcement Perspective on Animal Abuse



“Over the last decade, social scientists and law enforcement agencies have begun to examine cruelty to animals as a serious human problem closely linked to domestic violence, child abuse, elder abuse, and other violent crimes.”

“[Preventing animal cruelty] cannot undo generations of abuse, but can be an effective means of breaking the cycle of family violence from one generation to the next.”

-- International Association of Chiefs of Police, 2000



The National Law Enforcement Perspective on Animal Abuse



FBI

Cruelty to animals is a trait that shows up in the records of serial rapists and murderers -- the best predictor of future behavior is past behavior.

“A lot of what we do is threat assessment. Something we believe is prominently displayed in the histories of people who are habitually violent is animal abuse.”

-- FBI Special Agent Alan Brantley, Behavioral Science Unit

When asked how many serial killers had a history of abusing animals, Special Agent Brantley’s response was, “The real question should be, how many have not?”

-- Humane Society of the US



The National Law Enforcement Perspective on Animal Abuse



"One of the most dangerous things that can happen to a child is to kill or torture an animal and get away with it."

Margaret Mead (1901 - 1978)



“Attending to animal abuse is [not] a panacea for dealing with the challenges of youth violence. Violent behavior is multi-dimensional and multi-determined, and its developmental course is still the subject of concerted research. However, animal abuse has received insufficient attention as one of a number of ‘red flags’ -- warning signs or sentinel behaviors that could help identify youth at risk for perpetrating interpersonal violence and youth who have themselves been victimized.”

(Frank Ascione, 2001)



Why Should You Care? Animal Abuse Exposes Other Crimes



Animal abuse can identify people
other criminal activities

- 35% of search warrants executed for animal abuse or dog fighting investigations resulted in seizure of either narcotics or guns.
- Of 22 offenders arrested for animal abuse violations, 18 had priors for battery, weapons or drugs. 5 had subsequent arrests for felony offenses.



“An important part of our anti-violence strategy includes strict enforcement of the dog fighting statutes. Dog fighting is directly connected to the violent world of gangs, drugs and weapons.”



Why Should You Care?

Animal Abuse Exposes Other Crimes



Of 200 animal abuse offenders:

- a history of animal abuse was a better predictor of sexual assault than previous convictions for homicide, arson or firearms offenses
- 61.5% had also committed an assault; 17% had committed sexual abuse; 8% had arson convictions. 99% of cruelty offenders had committed other crimes.
- animal cruelty offenders averaged 4 different types of criminal offenses (particularly sexual assault, domestic violence and firearms offenses). All sexual homicide offenders reported having been cruel to animals.

(Gullone & Clarke, 2008)



Why Should You Care?

Animal Abuse Is a Lethality Assessment

Nashville, Tenn.: 3 top indicators that a woman will be killed by her batterer



- **Suicide threats?**
- **Access to weapons?**
- **Threats to mutilate or kill pets?**

**DV cases increased 12,000 to 18,000 (UP 50%)
DV fatalities decreased 30 to 6 (DOWN 80%)**

Why Should You Care?

Plain View Violations, Witnesses Talk

- **Incidents often occur in plain sight**
 - neighbors more likely to report cases
 - easier investigations
- **Witnesses or victims more comfortable talking**
- **Inflicts pain and suffering on human and animal victims**



Why Should Law Enforcement Officers Care About Animal Cruelty?

- **Animal cruelty needs to be taken as seriously as any human violence case ... predictor and indicator to other crimes**
 - Old Attitude: “It’s just an animal...”
 - New Attitude: “Who will the offender harm next?”
- **These crimes destabilize communities**
 - Investigations uncover other family violence, drugs, weapons, etc.
- **Animals feel and react to pain as humans**
- **Animals are protected under the law**
- *You will get press*

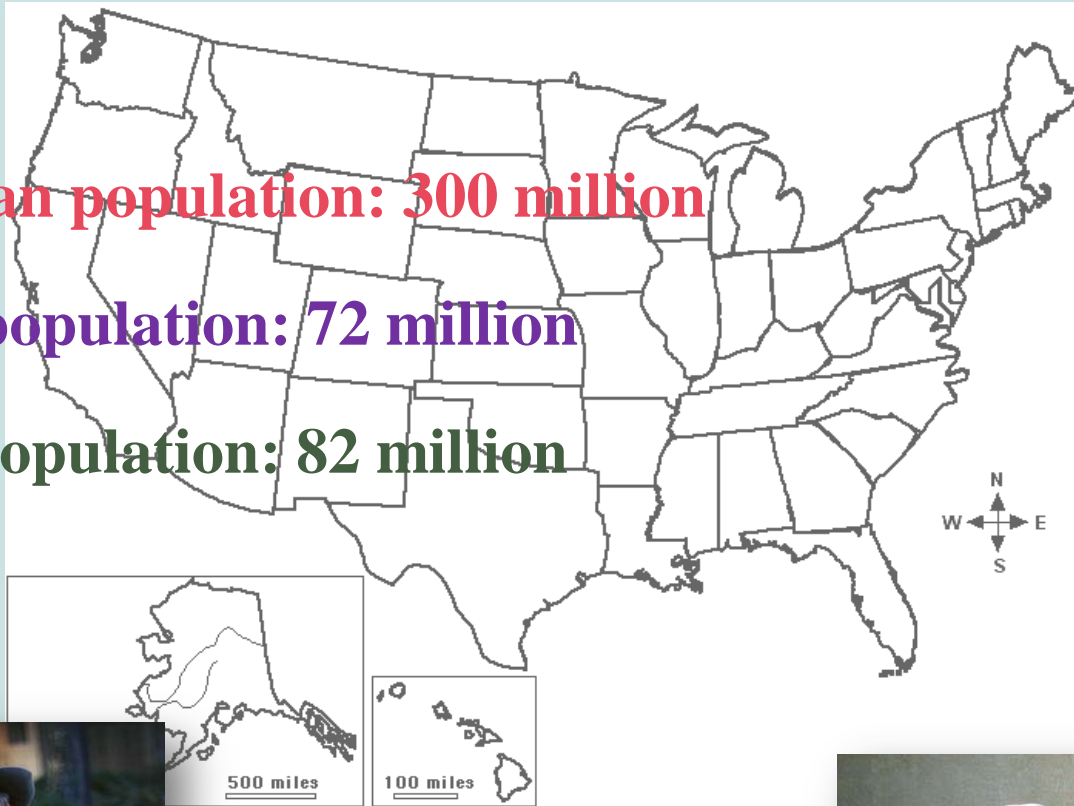


What is the Role of Pets in American Families?

Human population: 300 million

Dog population: 72 million

Cat population: 82 million



What is the Role of Pets in American Families?

- More American homes have pets than have children
- There are more dogs in the US than people in most European countries
- There are more cats in the US than dogs
- We spend more money on pet food than on baby food
- A child in the US today is more likely to grow up with pets than with a father



What is the Role of Pets in American Families?

Who cares for all these pets?

FAMILIES WITH CHILDREN!



67.7% of households with children younger than 6 have pets

74.6% of households with children older than 6 have pets

**Female is the primary caregiver
in 74.5% of pet-owning households**

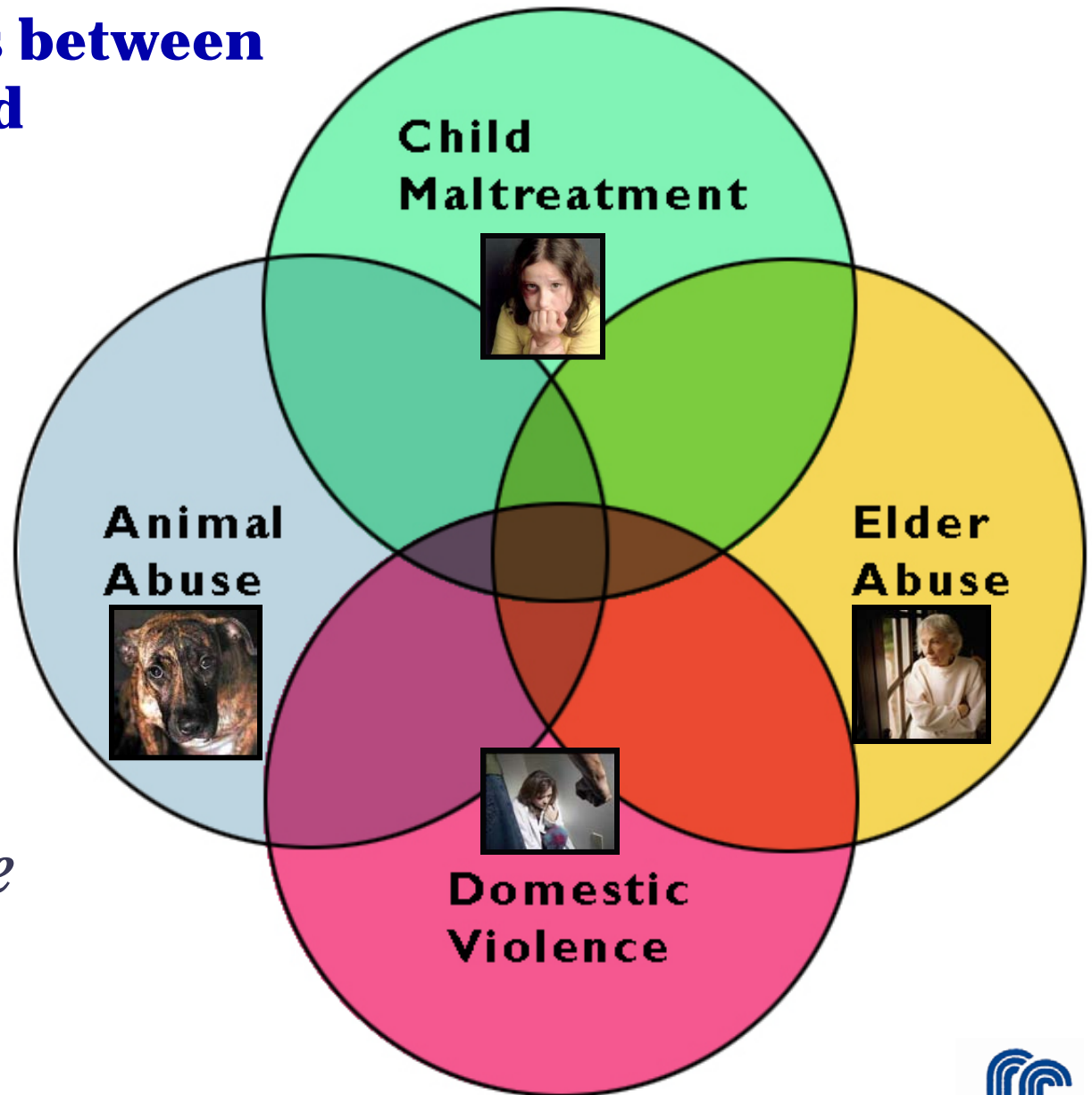
AVMA: U.S. Pet Ownership & Demographics
Sourcebook, 2007



The Intersections between Animal Abuse and Other Forms of Family Violence

“When animals are abused, people are at risk;

When people are abused, animals are at risk.”



What Are the Most Common Intersections?

Domestic
Violence

1. **Abusive partner harms, kills or threatens pets to humiliate, intimidate, or force partner into compliance and silence**
2. **Battered women are afraid to leave home for fear that partner will kill pets, or because there is no one to care for pets**

Child
Sexual
Abuse

3. **Abusive parent kills, harms or threatens pets to coerce children into sexual acts or silence**

Juvenile
Offenders

4. **Disturbed children kill or harm animals to act out aggression, relieve boredom, emulate parents' behavior, or preempt parents from killing the pet**

Hoarding

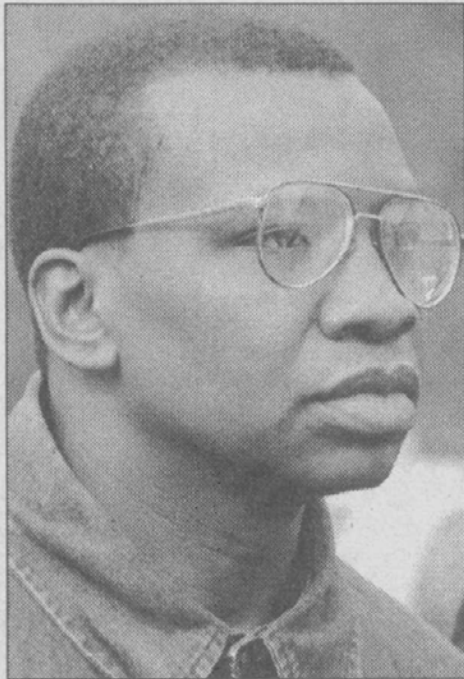
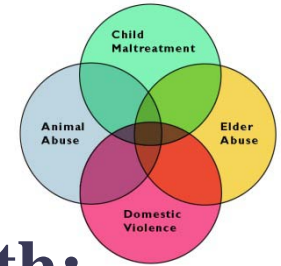
5. **Mentally ill persons, often elderly, hoard pets**

Animal
Fighting

6. **Adults and youths participate in dog fights**



Case Study #1: Animal Welfare Investigators Are First Responders



The Rev. Javan McBurrows of
Third Christian Church in the city

**“A 4-year-old is beaten to death;
a pastor and family vanish”**

-- Philadelphia Inquirer - Jan. 11, 1999



AKIRA SUWA / Inquirer Staff Photographer

Authorities yesterday condemned the Rev. Javan McBurrows' home in North Hills, Upper Dublin Township, where he was found dead on the church's answering machine. In Montgomery County, where in... and forth in front of his



Case Study #2: There's More Than One Way to Get a Lowlife Off the Streets



Case Study #3: Animals Are Harmed to Control Domestic Violence Victims

Family violence often begins with pet abuse

By Sandy Bauers
INQUIRER STAFF WRITER

As Sandra Ruotolo explained to the judge, she was thinking of her dogs when she pulled the trigger.

For 13 years, she said, her husband had battered her. But on a March night in 1991 in their Juniata Park home, he not only whipped her with a vacuum-cleaner cord, he also punched one of her four German shepherds. If Ruotolo left him, he warned, he would find her and slit their throats in front of her.

Later, as her husband slept, she loaded a .38-caliber pistol and pointed it at herself. A moment away from suicide, however, she saw her eldest female dog and was seized by the thought that "if I die, Duchess, what's going to happen to you?"

So, she told the judge, she "walked into the bedroom and shot him."

Ruotolo is serving 10 to 20 years for third-degree murder.

Diane Hall, counseling director at Women Against Abuse in Philadel-

phia, remembers the case with regret. Ruotolo had contacted the agency about going into a shelter. But Ruotolo would not leave her dogs, and the shelter could not take them.

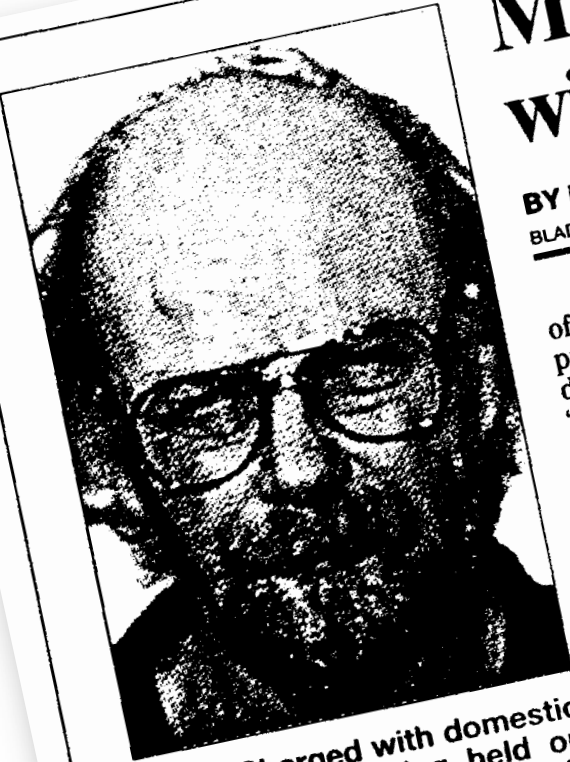
That tragic scenario might play out differently today, as social-welfare experts home in on a link between family violence and animal abuse. A batterer's first target, researchers have found, often is a pet, which then may be systematically threatened, tortured or killed in order to control human victims — to keep a wife from fleeing or to enforce a child's silence.

Recognition of an animal's precarious place in what is called the "cycle of violence" already has led to changes in the way police and protective agencies — for people and animals — deal with domestic rows. This month, for instance, the Pennsylvania SPCA in Juniata Park inaugurated a program, PetNet, that provides foster care for the pets of

See **ABUSE** on A24

**Area agencies
are homing in
on the link
between the
two types of
abuse.**

Case Study #4: “Just When You Think That You’ve Seen Everything...”



Davis: Charged with domestic violence, he's being held on bond in the Lucas County jail.

Man who allegedly beat wife, killed kitten is held

BY ROBIN ERB
BLADE STAFF WRITER

An East Toledo man accused of killing his wife's kitten by putting it in an oven set at 500 degrees and then telling her "Your dinner's ready" appeared in court yesterday on animal cruelty and domestic violence charges.

Dennis Davis, 56, of Main Street, was ordered held in the Lucas County jail in lieu of \$8,500 bond by Judge Mary Trimboli of Toledo Municipal Court. "Just when you think they've found every way possible to manipulate someone,

somebody comes up with something new," said Sam Nugent, chief prosecutor. "This is quite brutal, quite unnerving."

"I've never had anything like this," Kevin Warner, a Toledo Humane Society investigator, said.

The case began about 3:30 p.m. Jan. 9, according to a police report filed by Roberta Davis, 41, who told officers that she is seeking a divorce from her husband.

Ms. Davis, who did not call police at the time but went to the downtown police station

See KITTEN, Page 18 ▶



Case Study #5: Animal Abuse as Coercion and Control in Stalking



Crystal Brown, 17, plays with her puppy, Diesel, in her St. Paul, Minn., home. Soon after her dog Chevy went missing, she received its head in a box – on Valentine's Day.

History of the Animal Abuse/ Human Violence Connection

The Cycles of Violence - 1970s

Arson



Animal
abuse



Bedwetting



History of the Animal Abuse/ Human Violence Connection



David Berkowitz
“Son of Sam”



Albert DeSalvo
“Boston Strangler”



Jeffrey Dahmer

The “Tangled Web” of Serial Killers - 1980s

The Rogues’ Gallery continued into the 1990s...
and beyond...



Ted Bundy



Lee Malvo



Donald Rader
“The BTK Killer”

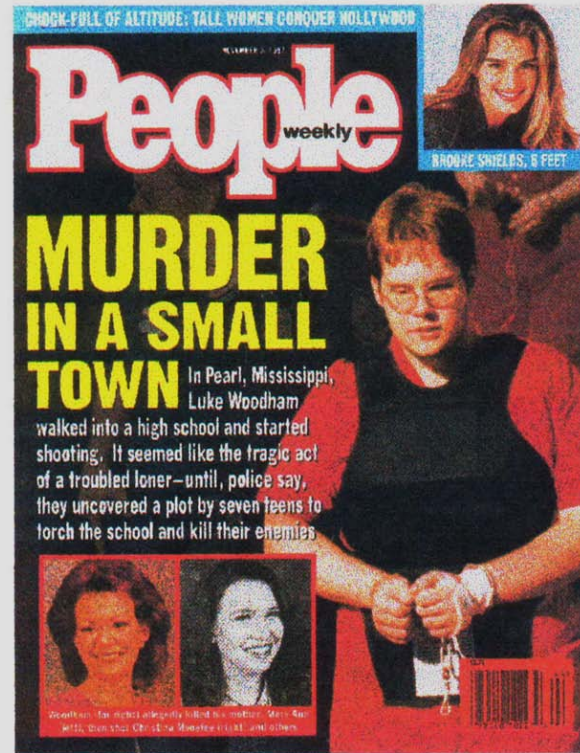


Brian David
Mitchell

Not every
abuser
becomes a
psychopath...
but he is worth
watching and
intervening

History of the Animal Abuse/ Human Violence Connection

The School Yard Shooters – 1990s



Luke Woodham
Pearl, Miss.
Age 16



Andrew Golden
Jonesboro, Ark.
Age 11

Animal Abuse and Family Violence: Partners in Crime



This ends Part 1.

**Please continue on to Part 2: Defining and Identifying
Animal Cruelty, Abuse and Neglect**



The Latham Foundation Animal Abuse & Family Violence Prevention Project
1826 Clement Avenue

Alameda, CA 94501

www.latham.org

(510) 521-0920

For more information:

Phil Arkow, Chair – arkowpets@snip.net 856-627-5118

